



QUALYSGUARD® QUICK TOUR

VERSION 7.1

April 27, 2012



Copyright 2011-2012 by Qualys, Inc. All Rights Reserved.

Qualys, the Qualys logo and QualysGuard are registered trademarks of Qualys, Inc. All other trademarks are the property of their respective owners.

Qualys, Inc.
1600 Bridge Parkway
Redwood Shores, CA 94065
1 (650) 801 6100

Introducing the New User Interface

The QualysGuard new user interface is now available to all QualysGuard users. The new QualysGuard user interface is easy-to-use with powerful Web 2.0 capabilities featuring interactive dashboards, actionable menus and workflows, context-based interactions with feedback messages to guide you through the whole process.

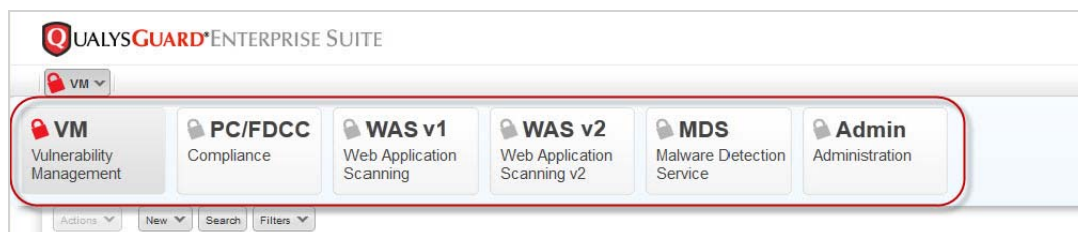
Getting Around

Let's take a look now at the user interface and how to get around.

Choose An Application

The applications in your QualysGuard® IT Security and Compliance Suite are presented together in one easy-to-use security management platform. The Vulnerability Management (VM) application is always available and other applications may be enabled for your subscription.

You use the Application Picker in the top left corner to choose the application you want to work in. All of the applications that have been enabled for your subscription are listed.



Your QualysGuard Suite may include these applications:

VM

The Vulnerability Management (VM) application automates the lifecycle of network auditing and vulnerability management across the enterprise, including network discovery and mapping, asset prioritization, vulnerability assessment reporting and remediation tracking according to business risk. Also included is QualysGuard PCI Compliance (PCI) which provides businesses, online merchants and Member Service Providers the easiest, most cost-effective and highly-automated way to achieve compliance with the Payment Card Industry Data Security Standard (PCI DSS).

PC/FDCC

Using the Compliance application for Policy Compliance (PC) and Federal Desktop Core Configuration (FDCC), an organization can reduce the risk of security threats and provide proof of compliance with multiple regulations and auditor requirements. Your QualysGuard Suite may include PC only, or PC and FDCC together.

WAS v1

The Web Application Scanning (WAS) v1 application enables organizations to assess, track and remediate web application vulnerabilities and sensitive content.

WAS v2

The Web Application Scanning (WAS) v2 application is built on Qualys' new and powerful next generation SaaS platform. QualysGuard WAS v2 brings web application security to a new level using the power and scalability of the cloud to accurately discover, catalog and scan large numbers of web applications ensuring increased productivity and a high level of protection.

MDS

The Malware Detection Service (MDS) application helps businesses of all sizes protect their web sites against malware. It allows you to scan your site for malware and provides automated alerts and reports with verified fixes from our security experts so you can remediate these issues.

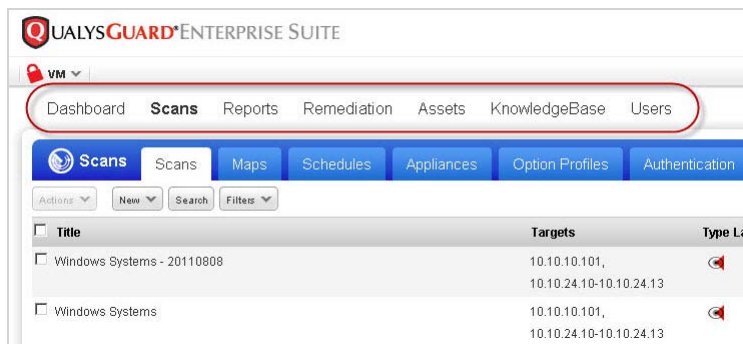
Admin

The Administration (Admin) application is where you manage user accounts for Malware Detection Service (MDS) and Web Application Scanning (WAS).

Go to a Section

Once you've selected the application you want to work in, you'll see a set of menu options across the top of the screen representing the main sections of functionality within the application. Each section provides contextual workflows specific to the application you're in. For example, go to the Scans section under VM to launch and manage vulnerability scans. Go to the Reports section under VM to run and manage vulnerability reports.

For the VM application, you'll have these options across the main menu: Dashboard, Scans, Reports, Remediation, Assets, KnowledgeBase and Users.



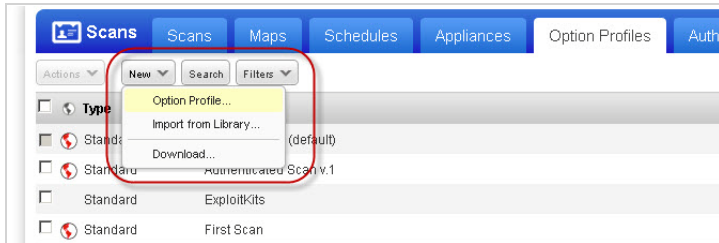
Each section includes at-a-glance all of the tools and setup options you need for success. In the Scans section you immediately have access to your scan schedules, scanner appliances, option profiles, authentication records and scan setup options. This means you don't have to leave the Scans section to set up your scan configurations or set global options related to scans.

The Assets section and the Users section appear within all applications. The Assets section is where you manage and group the assets in your account, including your host assets (IP addresses), domains and virtual hosts. The Users section is where you manage users and business units. Any user with management authority can add users with unique roles and privileges. It's best practice to add at least one new user account. We recommend a Manager or Unit Manager to start, although any user account except Contact is fine.

Take Actions

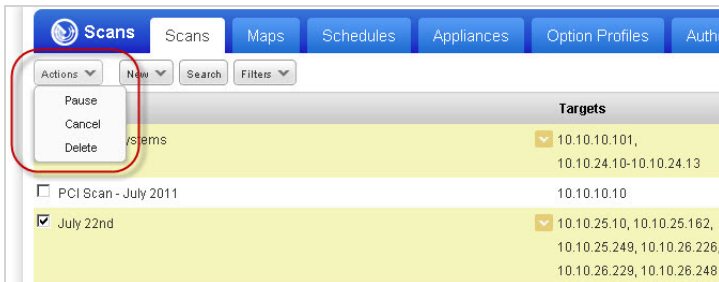
Start New Workflows

The New menu above each data list is your starting point for new workflows and configurations. Use the New menu to launch new scans, run new reports, create new option profiles, and so on.



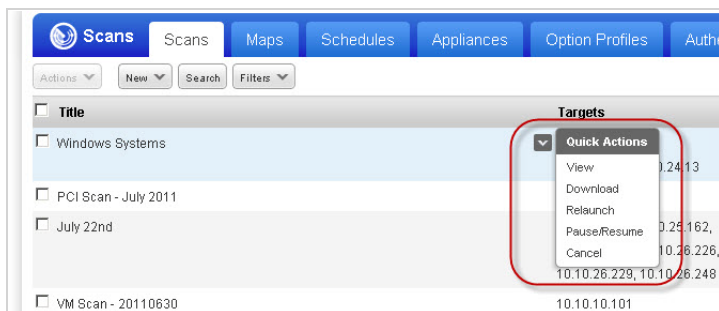
Take Bulk Actions on Multiple Items

You can take bulk actions on multiple items in a data list using the Actions menu. For example, pause or cancel multiple running scans in a single action. To do so, select the check box for each item in the list your action applies to, then select an action from the Actions menu above the list.



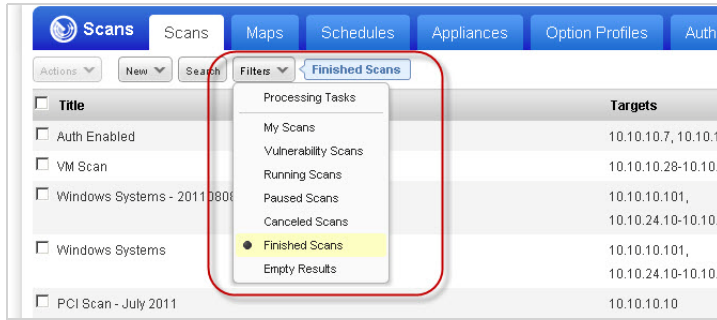
Take Quick Actions on a Single Item

You can also take action on a single item in a data list using the Quick Actions menu. For example, view or download the Scan Results report for a finished scan in the scans list. When you mouse over a data list row, the row is highlighted and a drop-down arrow appears. Click the arrow to see the Quick Actions menu with available actions for the selected item.



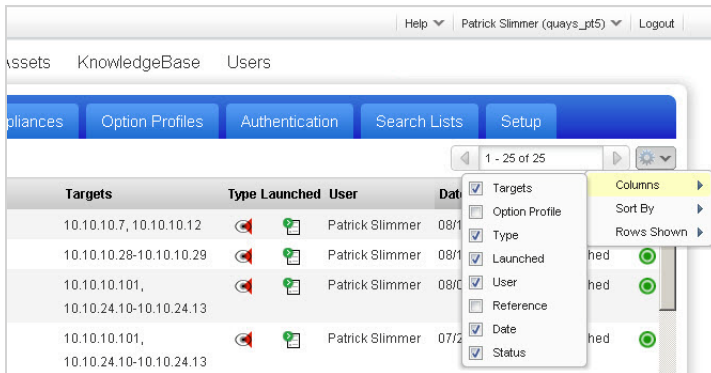
Use Filters

Use filters to change your data list view. If you're viewing the scans list and you're only interested in seeing finished scans, then you would select Finished Scans from the Filters menu. The list is instantly updated and a message appears next to the Filters menu as a visual reminder that filters are turned on. Clear the filter to return to the full list.



Customize Your View

You can hide columns, change the sorting criteria and specify the number of rows to appear in each data list. To do so, use the Tools menu  above the data list, on the right side.

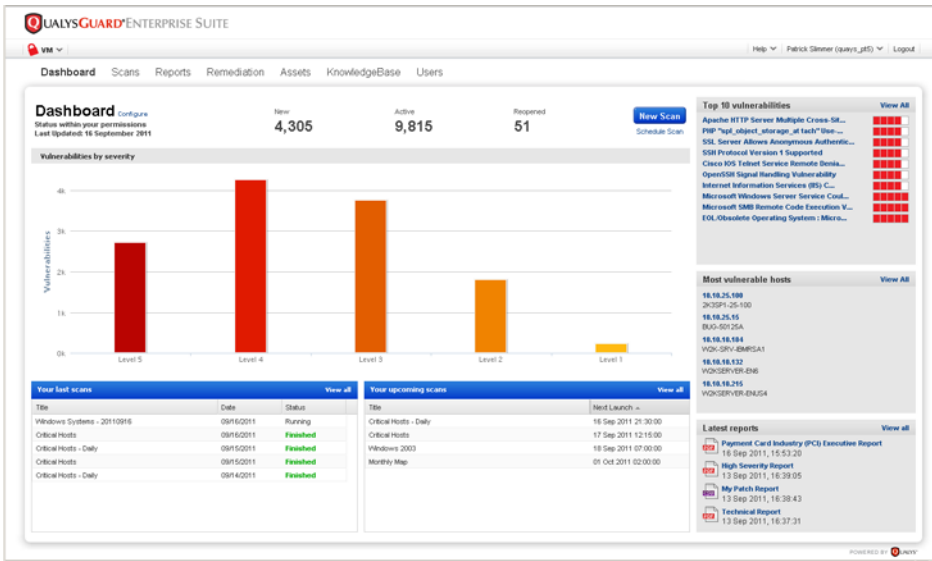


View Interactive Dashboards

Each application includes an interactive dashboard with a high-level summary of your security and compliance posture based on the scan data available in your account. First select an application from the application picker and then go to the Dashboard option on the top menu.

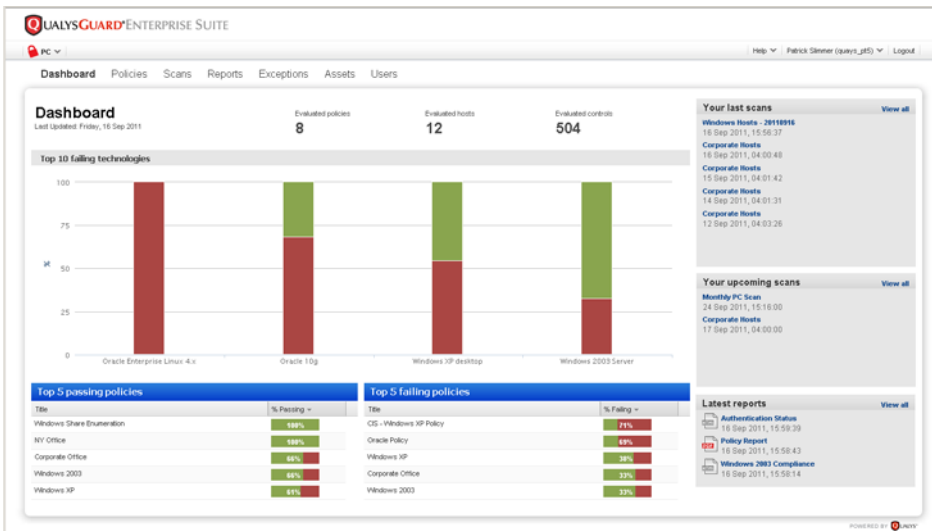
VM Dashboard

The VM dashboard provides a summary of your overall security posture. The dashboard displays the number of New, Active and Reopened vulnerabilities, and a graph with vulnerabilities by severity level. From the dashboard, you can start and schedule new vulnerability scans, view a list of the most vulnerable hosts in your account, download reports and more.



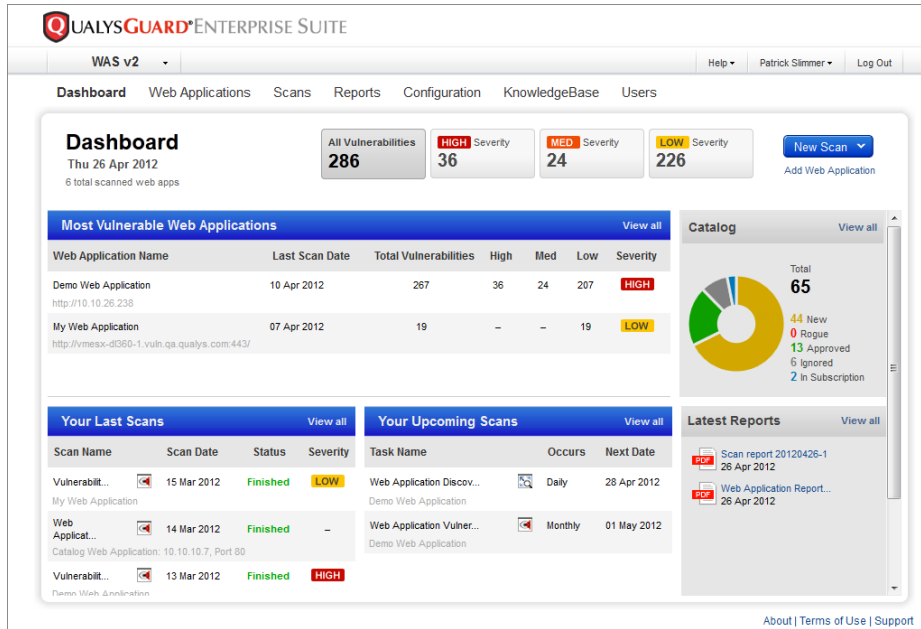
PC Dashboard

The PC dashboard provides a summary of your overall compliance status across all policies in your account. It displays the top 10 failing technologies so you can prioritize your compliance efforts. From the dashboard, you can drill-down into a policy summary report for any policy listed, make changes to upcoming schedules, view compliance reports and more.



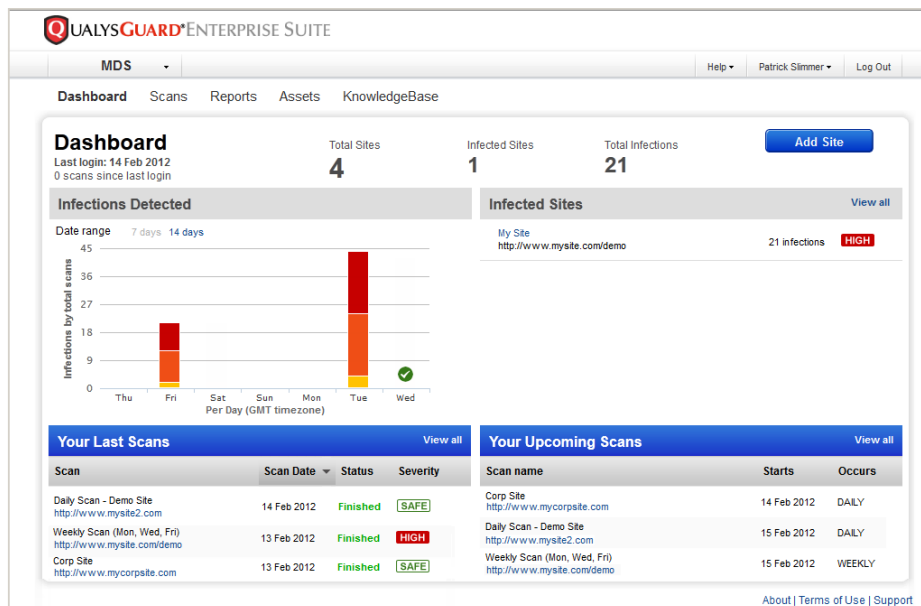
WAS Dashboard

The WAS v2 dashboard provides a summary of the threats detected across all web applications in your account. From the dashboard, you can take actions on completed and upcoming scans, view information about your catalog and view saved reports.



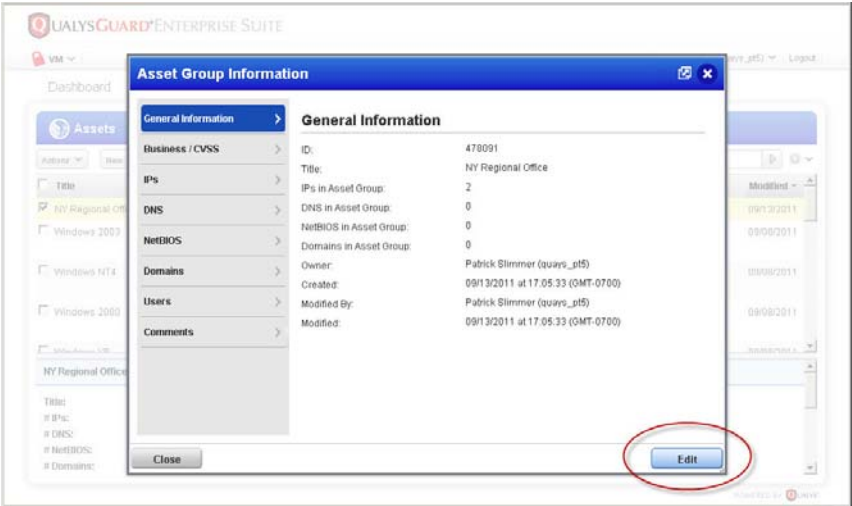
MDS Dashboard

The MDS dashboard provides a summary of your malware scan results, showing the total number of sites with infections, and total the number of infections across all sites in your account.



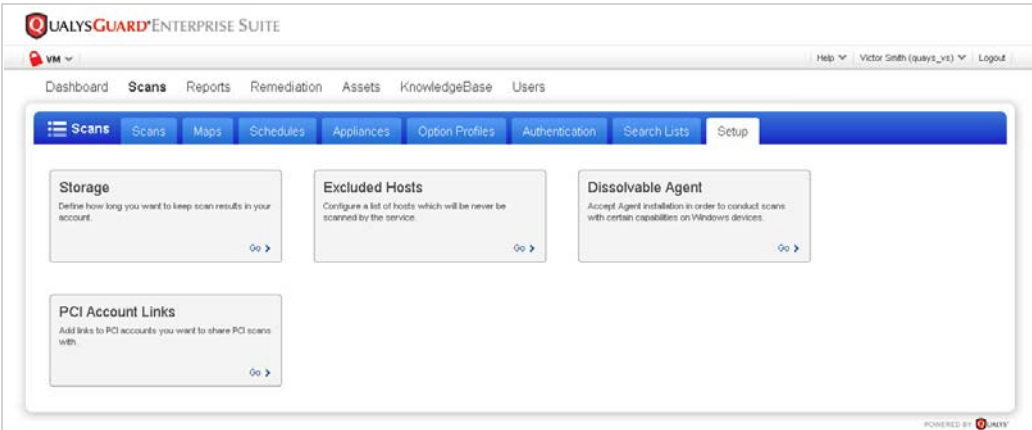
Use Streamlined Workflows

Workflows are better integrated in our new context-based UI so you can accomplish tasks faster. For example, when viewing the details of an asset group, you can click the Edit button to immediately make changes to the asset group.



Review Setup Options

Review setup options in the context of your current view. When you're in the Scans section go to the Setup tab to see global setup options related to scans and scan results. When you're in the Users section go to the Setup tab to see options related to users, and so on. The ability to change setup options is determined by your user role and permissions.



Send Us Your Feedback

We look forward to your feedback. Please use the following Qualys community page to send us your comments and questions:

<https://community.qualys.com/community/qualysguard/newui/>